



RebarCAD
World Class Rebar Software



REBARCAD INDIA 2018.1 RELEASE NOTES



 **AUTODESK**
Authorised Developer

Microsoft Partner
Gold Application Development

Contents

Release notes	1
Version 2018.1	1
Version 2018.0	4
Version 2017.10	5
Version 2017	6
Version 2016.1	7
Version 2016	10
Version 2015.1	10
Version 2015	11
Version 9.12 Service Pack (Build 1819)	12
Version 9.12	12
Version 9.11 Service Pack (Build 1713)	15
Version 9.11	15
Version 9.10	16
Version 9.09 Service Pack (Build 1611)	17
Version 9.09	17
Version 9.08 Service Pack (Build 1548)	19
Version 9.08	19
Version 9.07 Service Pack (build 1498)	20
Version 9.07	20
Version 9.06	21
Version 9.05	22
Version 9.04	22
Version 9.03	23
Version 9.02	24
Version 9.01	25

Release notes

Thank you for upgrading to the latest version of **RebarCAD India**.

These release notes summarise the enhancements and corrections that have been made for each release of the product.

Version 2018.1

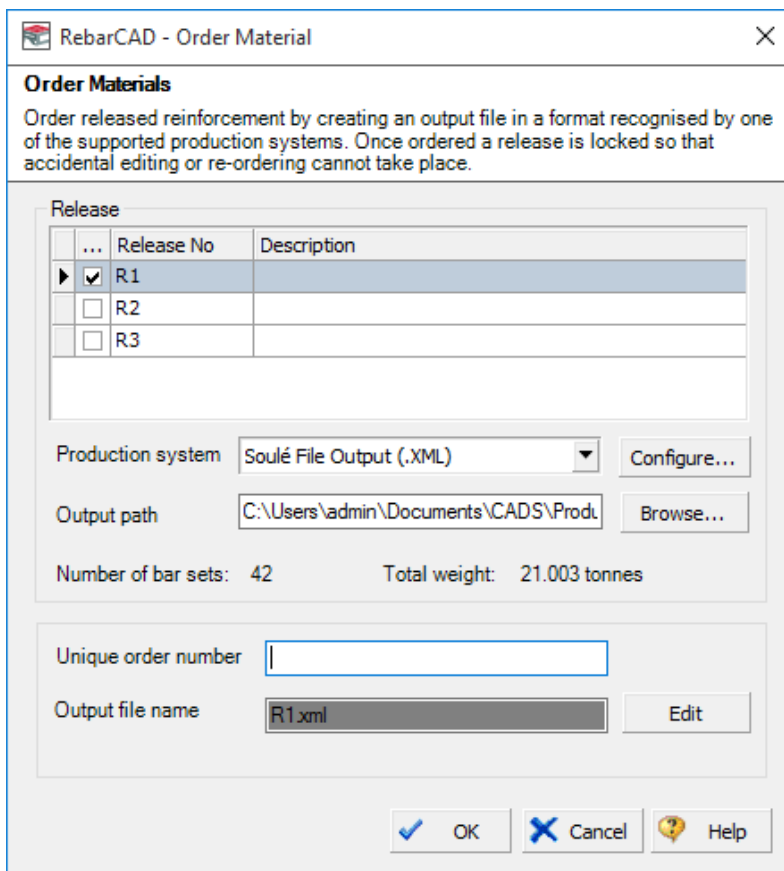
1. AutoCAD Support

RebarCAD India 2018.1 supports the following Autodesk platforms:

AutoCAD Vertical	Supported Versions
AutoCAD	2016, 2017 & 2018
AutoCAD Architecture	2016, 2017 & 2018

2. Soule file output (.xml)

The Soule production system now supports a new .xml file format.



RebarCAD - Order Material

Order Materials
 Order released reinforcement by creating an output file in a format recognised by one of the supported production systems. Once ordered a release is locked so that accidental editing or re-ordering cannot take place.

...	Release No	Description
<input checked="" type="checkbox"/>	R1	
<input type="checkbox"/>	R2	
<input type="checkbox"/>	R3	

Production system: **Soulé File Output (.XML)** Configure...

Output path: **C:\Users\admin\Documents\CADS\Prod** Browse...

Number of bar sets: **42** Total weight: **21.003 tonnes**

Unique order number:

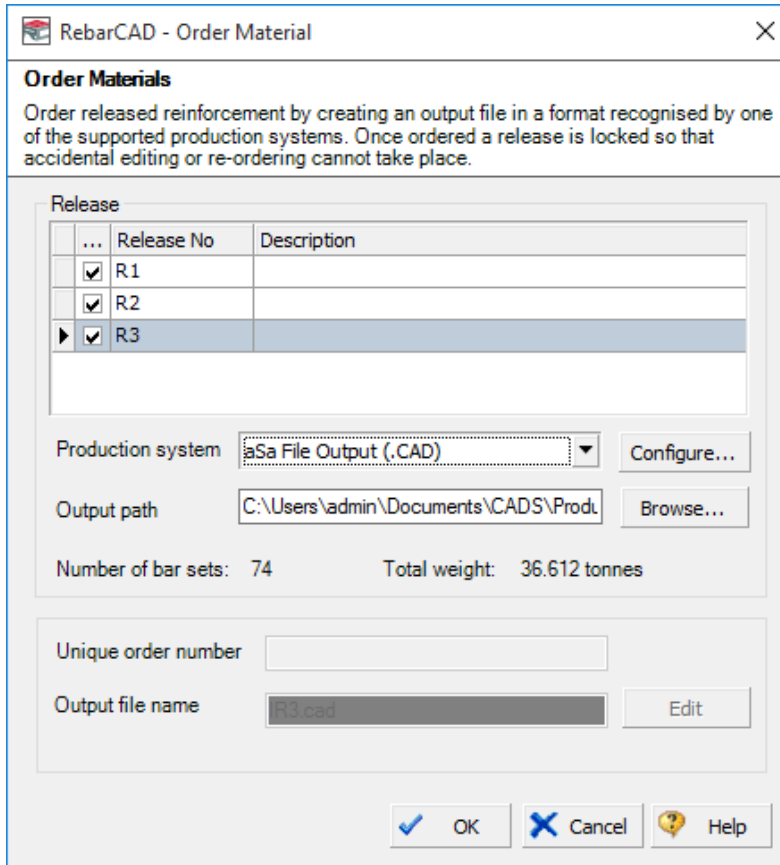
Output file name: **R1.xml** Edit

OK Cancel Help

3. aSa file output

The aSa production system has been enhanced to support ordering of multiple releases at a time. Once multiple releases are selected for ordering then,

- ▶ Separate output files will be generated for each of the selected releases;
- ▶ The user will not be allowed to set the unique order number and the output filename will be set the same as that of the release number;
- ▶ The header information will be set the same for all the output files.



RebarCAD - Order Material

Order Materials
 Order released reinforcement by creating an output file in a format recognised by one of the supported production systems. Once ordered a release is locked so that accidental editing or re-ordering cannot take place.

...	Release No	Description
<input checked="" type="checkbox"/>	R1	
<input checked="" type="checkbox"/>	R2	
<input checked="" type="checkbox"/>	R3	

Production system: **aSa File Output (.CAD)** Configure...

Output path: **C:\Users\admin\Documents\CADS\Prod** Browse...

Number of bar sets: 74 Total weight: 36.612 tonnes

Unique order number:

Output file name: **R3.cad** Edit

OK Cancel Help

4. Stock Bar Optimiser improvements

Various improvements in the Stock Bar Optimizer, which includes the following:

- ▶ Support for multiple stock length;
- ▶ Support for multiple drawings;
- ▶ Support for rebar management.

RebarCAD - Stock Bar Optimiser

Information And Usage
 This dialog helps you optimise your stock bars and offcuts available in your fabrication yard. This dialog can read your offcut file and stock bar input to optimise reinforcement steel which needs to be fabricated. You can iterate with different options and once satisfied, produce a graphical cutting schedule.

Calculation Option: Use stock only

Offcut File Name: C:\ProgramData\CADS\autocad 2018\cads rc india...

Project File Name: C:\Users\admin\Documents\CADS\AutoCAD 201

Stock Length | Offcut | Drawings

Drawing File ID	Drawing File Name	Drawing File Location
D01	D001.dwg	C:\Proj001\
D02	D002.dwg	C:\Proj001\
D03	D003.dwg	C:\Proj001\
D04	D004.dwg	C:\Proj001\

Filter

By project: By release:

	File Name	Release
<input type="checkbox"/>	D004.dwg	R1
<input checked="" type="checkbox"/>	D003.dwg	R3
<input type="checkbox"/>	D003.dwg	R2
<input checked="" type="checkbox"/>	D003.dwg	R1
<input checked="" type="checkbox"/>	D002.dwg	R3
<input type="checkbox"/>	D002.dwg	R2
<input type="checkbox"/>	D002.dwg	R1
<input checked="" type="checkbox"/>	D001.dwg	R3
<input type="checkbox"/>	D001.dwg	R2
<input type="checkbox"/>	D001.dwg	R1

Export Drawing Data Calculate Update Offcut To File

Overall Efficiency (%)	Steel Utilised (Tonnes)	Steel To be Procured (Tonnes)	Scrap (%)	Scrap (Tonnes)	Offcut (%)	Offcut (Tonnes)	Offcut Utilised (%)	Offcut Utilised (Tonnes)	Offcut Unutilised (Tonnes)
92.839	285.450	339.637	1.171	1.139	5.990	53.048	0.000	0.000	0.000

Output

File Location: C:\Users\admin\Documents File Name: D004 CSV (Comm...) Export

Close

Support for multiple stock length

The user is now allowed to add multiple stock length values for a particular bar grade and size.

Support for multiple drawings

The user is now allowed to choose the calculation option between “By current drawing” and “By project”. If the “By project” option is selected then the user is allowed to export the bar data of each of the individual drawings in the project to a project file (.sbo), located at a centralised location, by using the “Export Drawing Data” button. Once the bar data of all the required drawings in the project are exported to the project file, and the required filter options are chosen, the “Calculate” button will be enabled.

Support for rebar management

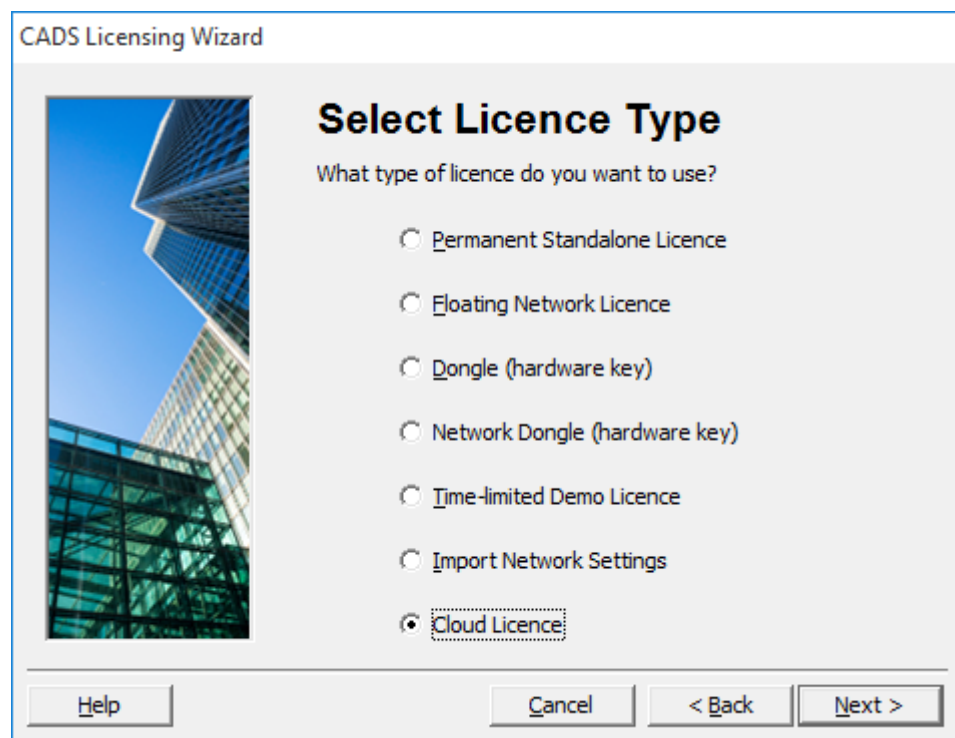
More reporting fields are included to enhance the rebar management. The new fields include the following:

- ▶ Steel Utilised (Tonnes) ;
- ▶ Steel To Be Procured (Tonnes);
- ▶ Scrap (Tonnes);
- ▶ Offcut (Tonnes);
- ▶ Offcut Utilised (Tonnes);
- ▶ Offcut Unutilised (Tonnes).

The .CSV file format of the report also includes these new fields.

5. Licensing

Licensing is enhanced to support cloud licensing.



6. Defect fixes

A defect in the grid tool, in which the extension lines were missing, has been fixed.

A defect, in which there was a mismatch in the weight per bar in the bar list on drawing at a specific sequence, has been fixed.

A defect in adding labels to over stock bars at a specific sequence has been fixed.

A defect, in which the electronic bar list data was not generated at a specific sequence when the drawing file was saved, has been fixed.

Version 2018.0

1. AutoCAD Support

RebarCAD India 2018.0 supports the following Autodesk platforms:

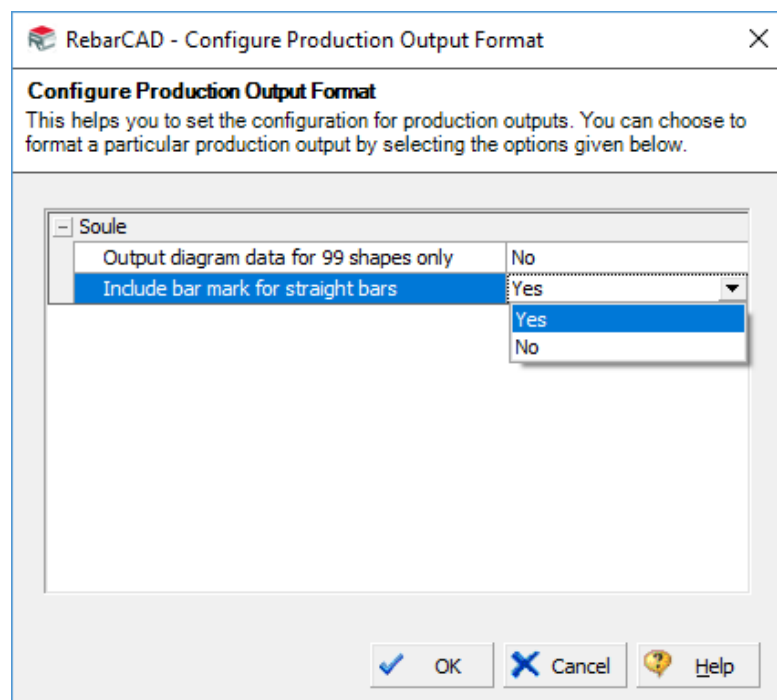
AutoCAD Vertical	Supported Versions
AutoCAD	2016, 2017 & 2018
AutoCAD Architecture	2016, 2017 & 2018

2. Order materials

The 'Order Materials' dialog is enhanced to allow the user to create a new folder for production output.

3. Soule file output

The Soule file output now includes bar marks for straight bars, based on the configuration. If the configuration, "Include bar mark for straight bars" is set to 'Yes', then the bar mark will be output for the straight bars and if it is set to 'No', then the bar mark will not be output.



4. Defect fixes

A defect in which the dimension lines were not added in the stair outlines has been fixed.

A defect when the release colour set to certain colours was not set appropriately for bar labels has been fixed.

A defect in the Check database command at a specific sequence has been fixed.

A defect in which the weight summary table was not marked with an invalid flag at a particular sequence has been fixed.

The end adjustment value for DEXTRA BTSTD Type C positional coupler is now updated to match the latest DEXTRA ROLLTEC product datasheet.

Version 2017.10

1. Coupler improvements

The DEXTRA ROLLTEC coupler data is updated to match the latest DEXTRA ROLLTEC product data sheet.

2. Coupler dialog enhancement

The 'Add/Edit coupler' dialog has been enhanced so that when a manufacturer's name is set, the check box to 'Attach Label' is checked by default, when the global configuration 'AUTOATTACHLABEL' is set to 'YES' in the 'COUPLERSCONFIG'. This allows the user to automatically attach the coupler labels to the bars when the coupler/thread symbols are attached to it.

3. Defect fixes

A defect where the blank line inserted to the first line of the schedule was not displayed in the schedule on drawing in a particular sequence has been fixed.

A defect where the issue and revision configuration settings configured in the drawings created in the older version were lost on opening the drawing in the latest version, has been fixed.

A defect in the project match bar tool, where the bar marks were generated ignoring the prefix in a particular sequence has been fixed.

A defect where the existence of a blank AutoCAD layer in the RebarCAD drawing caused the loss of the schedule configuration settings, has been fixed.

A defect where an error occurred when placing the schedule on the drawing in a particular sequence, has been fixed.

Version 2017

1. AutoCAD Support

RebarCAD India supports the following Autodesk platforms:

AutoCAD Vertical	Supported Versions
AutoCAD	2015, 2016 & 2017
AutoCAD Architecture	2015, 2016 & 2017

2. Save as V9.08 Drawing...

The new 'Save as V9.08 Drawing...' allows you to save back the drawings created in RebarCAD 2017 and higher versions in V9.08 format.

This command can be accessed in one of the following ways:

- Using the 'Save as V9.08 Drawing...' menu in RebarCAD ->Utilities pop-up menu.
- Using the command "CADS_RC_SAVE_AS_V908" from the command prompt.

The drawing will be saved back automatically in the AutoCAD file format compatible with V9.08.

The default filename will be appended with V908, so that you do not accidentally save your active drawing while saving back to an older version.

3. Save as V9.04 Drawing...

Since the RebarCAD V9.04 through V9.07 shares the same RebarCAD data structure, the existing command 'Save as V9.07 Drawing...' is now renamed as 'Save as V9.04 Drawing...' to be more appropriate.

The drawing will be saved back automatically in the AutoCAD file format compatible with V9.04.

The command is also improved to append the default filename with V904, so that you do not accidentally save your active drawing while saving back to an older version.

4. Material Type

In all the coupler related dialogs, the caption 'Grade' is changed to 'Material Type' as they refer to the material type of the coupler.

5. Additional coupler symbols

Two new coupler symbols for form saver coupler and positional coupler are added to the existing coupler symbols list.

6. Defect fixes

A defect specific to AutoCAD 2016, in which a warning message was displayed, on loading RebarCAD after opening the drawing is fixed.

A defect specific to AutoCAD 2016, in which the erase bar set warning message was displayed, on erasing AutoCAD entities is fixed.

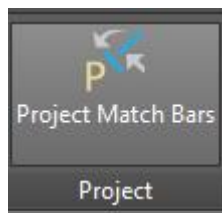
Version 2016.1

1. Project Match Bars

The new 'Project Match Bars' tool allows you to match the bar marks of identical shape code and dimensions across drawing files within a project.

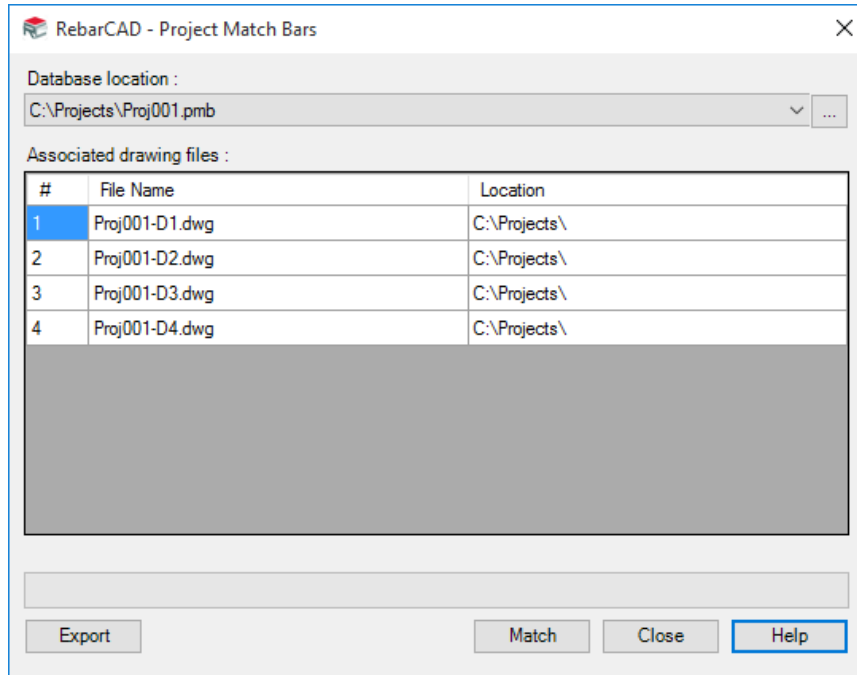
This tool can be accessed in one of the following ways:

- The 'Project Match Bars' menu in RebarCAD->Utilities pop-up menu.
- The 'Project Match Bars' tool in the 'RebarCAD' toolbar.
- The 'Project Match Bars' ribbon item in the 'Project' panel.



- "CADS_RC_PMB" command in the command prompt.

The Project Match Bars dialog will be displayed as shown in the image below:



Please refer to the help document for more details by clicking on the 'Help' button.

2. Object snap settings

The Object Snap settings issue has been fixed, in which the settings were sporadically lost.

3. Schedule improvements

The schedule format settings are now retained after inserting manual page breaks and after moving the schedule lines in the schedule.

It is now possible to insert a line (text line/blank line) above or below the selected schedule line in the schedule.

4. Reports and schedule on drawing improvements

Many improvements have been made in the reports.

A defect has been fixed in which the incorrect total weight of tapered ranges was reported (this happened when it was configured to display only the first and last bar of the tapered bars). This has been fixed in both the printed reports and in the schedule on drawing.

5. Issue and revision configurations

The issue and revision feature is enhanced with new configurations to configure the revision cloud layer, revision callout layer, revision table layer, revision cloud start width and revision cloud end width. You can now configure revision cloud and callout layers for each issue type.

6. Select bars

More filters are added to the 'Select Bars...' feature, which allows you to select the bars based on their type and size, bar mark prefix and drawing sheet.

7. Highlight bars

More filters are added to the 'Highlight Bars...' feature, which allows you to select the bars based on their type and size, bar mark prefix and drawing sheet.

8. Bar assignments

The features to assign bars to release, member, drawing sheet, bid item and bid structure are enhanced such that the bar labels are also highlighted in addition to the bar views, for easy identification of selected bar views and labels.

The 'New Set' and 'Range New Set' commands now allow you to pick the current bar assignments such as members, releases, drawing sheets, bid items and bid structures.

You can now apply release colour to bar labels either on release assignment or based on the order state of the associated release. Your preference can be configured in the 'Release and Ordering' configuration page.

9. Range improvements

Range texts are now made configurable for alternate ranges. The start mark, end mark and the total number of bars of the alternate ranges can also be configured as the range text for alternate ranges.

A defect has been fixed in which stretching ranges drawn with overstock length bars produced unexpected results.

The Check database command has been enhanced to detect and report any corrupted tapered ranges or ranges whose lengths are less than that of the c/c value.

10. Coupler improvements

The Coupler dialog has been reinstated to display the coupler details of both ends on a single screen.

When couplers are added to a bar view, any other bar views of the set automatically receive a coupler without the number of couplers changing in the Accessories List.

A defect has been fixed in which the coupler quantity was not considering the member quantity.

11. Production output improvements

The Order Materials feature now allows you to modify the desired production system in the Order Materials dialog itself.

A defect has been fixed that affected ordering when the production output system is Excel Format.

12. User interface improvements

The quick access toolbar in the RebarCAD workspace has been modified such that the 'Toggle Automatic Loading' command is moved to the right end to avoid accidental selection.

13. Defect fixes

A defect has been fixed in which the database was corrupted when adding extra label notes with special characters.

A defect has been fixed in which moving the labels drawn with label sketches moved the label sketches a little away from the label text.

A defect has been fixed in which 'cancelling title block configuration' dialog popped up a warning message when no title blocks were configured.

A defect has been fixed in which the bar references added by selecting the bar label view were also duplicated while duplicating the bar view alone.

Version 2016

1. AutoCAD Support

RebarCAD 2016 supports the following Autodesk platforms:

AutoCAD Vertical	Supported Versions
AutoCAD	2014, 2015 & 2016
AutoCAD Architecture	2014, 2015 & 2016

- Administrative privileges are no longer required when launching the software.
- Shape Sketches will get updated automatically if the master copy is modified.
- An issue related to the changing of the default layer to the schedule layer after auto-save, has been fixed.

Version 2015.1

- RebarCAD 2015.1 can now be installed in parallel with previous versions of RebarCAD.
- Linear tapered ranges now support the “Adjust Ends” option.
- The range text orientation has been corrected to follow the text reading standards while detailing ranges vertically.
- A defect has been fixed in which the “Schedule on drawing” failed to sort correctly in a specific sequence.
- A new option has been added to specify a tolerance value for bent bar leg dimensions when matching bar marks.
- A new option has been added to specify a scale factor for the schedule on drawing.
- A new option has been added to configure restricted bar sizes and to identify the instances of such bars present in the drawing file through the “Drawing Audit” command.
- The “Override Revision Mark” command has been enhanced to display all the revision marks available in the drawing file.
- A defect has been fixed in which the schedule failed to update when the “Rounding configuration setting” was changed.
- A new option has been added to specify the rotation angle while placing bar references.
- A defect has been fixed in the “Set to View” command, which failed to remove extra notes attached to the label.
- A defect has been fixed in which the schedule on drawing was not marked “INVALID” in a specific sequence.
- A defect has been fixed in the Group Layering Option (GLO), which modified the c/c values of ranges in a specific sequence.
- A bar references defect has been fixed, which scaled improperly while placing as blocks.

15. A defect has been fixed in the “Stretch” command, which incorrectly changed the bar marks in a specific sequence.
16. A defect has been fixed in which the “Ranges” created using the “Split Range” tool lost their bar information when duplicated.
17. A defect has been fixed in the Pinnacle production output file and in the Harris production output file which exported deleted bar information in a specific sequence.
18. A defect has been fixed in the Over Stock Length (OSL) feature to update the minimum dimensions based on the configured “Dimension Minimums”.
19. A defect has been fixed in the “Add/Edit coupler” command, which failed to retain the coupler information in a specific sequence.
20. A defect has been fixed in which coupler symbols were lost while pasting or mirroring bars with couplers as a “View”.
21. A defect has been fixed in which the Accessories list failed to update when bars with couplers were duplicated as a “Set”.
22. A defect has been fixed in the “Uncombined bars” command, which reported an error in a specific sequence.
23. A defect has been fixed in which Automatic Dimensioned Leaders (ADL) were drawn incorrectly in a specific sequence.
24. A defect has been fixed that placed the schedule on drawing in an incorrect table format, specific to AutoCAD 2015.
25. A defect has been fixed in which leaders were drawn incorrectly when the leader mode was set to “Centre”.
26. A defect has been fixed in the “Save As v8.4x” command, which caused the application to crash in a specific sequence.
27. A defect has been fixed in the “Run to Path” command, which placed the bars incorrectly in a specific sequence.
28. A defect has been fixed to show the correct view of the bars while importing jobs through the beam link option.
29. A defect has been fixed in the “Cut Stock Bar Optimiser” to show the correct quantity of utilised stock bars in the offcut file.
30. A defect has been fixed in CADS DE, which caused the application to crash in a specific sequence.
31. A defect has been fixed in which the stair flight detailer reported an error message in the command prompt.

Version 2015

1. Support for AutoCAD 2015.
2. Default OSNAP option has now been reverted to use “Near” while placing a label, instead of the default value.
3. New feature to reset Member, Release and a few other dialogs to its default position has been introduced.

4. New option added to the “Match bars” feature to suppress or display the default prompts.
5. Option added to show or hide the first issue revision mark in the schedule and drawing reports.
6. Fixed a defect in which incorrect values were displayed for the “page number” and “total page” fields in a specific sequence.
7. Fixed a defect that took considerable time in a specific sequence to place a bar list in the drawing.
8. Fixed a defect in which the “Edit Range” dialog displayed duplicated dimensions for tapered ranges in a specific sequence.
9. Fixed a defect which showed a “discrepancy error” when more than 60 characters were entered in the bar label notes.
10. Fixed the crash which occurred while using the “Place shape schedule” feature.
11. Fixed a defect which updated all bar sets of the same bar mark when one of its bars was stretched.
12. Fixed a defect which adopted the label direction of a previously drawn taper range.
13. Fixed a defect which did not update the schedule revision mark while editing the bars that were combined in the schedule.
14. Fixed a few defects in the Radial Bar Detailer that prevented a change of type and did not show a few shapes correctly.
15. Improvements made to the “Assign bars to release” feature which earlier displayed only the used types in a drawing instead of entire configured types.

Version 9.12 Service Pack (Build 1819)

1. Fix to a Check Database error, which corrupted the drawing data when a drawing sheet was deleted in a specific sequence.
2. Fix to the Check Database command to include an additional check for the bar set line number.
3. Fix to the range text annotation in fixed pitch and staggered fixed pitch ranges which reported an incorrect number of bars in a specific sequence.

Version 9.12

1. Support for AutoCAD 2014, AutoCAD Architecture 2014, AutoCAD Civil 3D 2014, AutoCAD Map 3D 2014, AutoCAD Mechanical 2014, AutoCAD MEP 2014 and AutoCAD Structural Detailing 2014.
2. Enhancement to the Coupler dialog.
3. New feature to assign symbols to different types and makes of Couplers and Threads.
4. New feature allows multiple editing of Bars with Coupler.
5. New feature to apply Coupler Grades.

6. Option to identify Unavailable Couplers present in the drawing.
7. Fix to the Coupler feature to support the copy and mirror operation on Bar View with Coupler.
8. Fix to the Accessories list which failed to update the Coupler quantity in specific sequences.
9. Enhancement to the Match bars command to match a bar based on the Drawing Sheet, Release or Member.
10. Enhancement to the Compact bars command to compact a bar based on the Drawing Sheet, Release or Member and to specify the starting Bar Mark number.
11. New feature to configure Stock Lengths for each Bar Size.
12. New feature to configure additional Tick types in the Tick and Tag Feature.
13. Enhancement to the Drawing Audit command to identify the Bars detailed with length greater than the stock length.
14. New feature to configure the Bar Reference to include a Block or Dimensioned Shape sketch.
15. New feature to group revision clouds.
16. New feature to configure the Range Annotation format and position.
17. Option to configure the Range Length for Range Annotation.
18. New feature to include dimensioned sketches in the Schedule on Drawing and printed reports.
19. New command CADS_RC_TRC introduced to identify corrupted tapered ranges in a drawing.
20. New feature to report Unlabelled bars as Incomplete while generating Production Output Files, placing the Bar Schedule on Drawing and generating printed Reports.
21. New feature to place curtail length for Tapered Ranges.
22. Option to support Calibri font type in the shape diagram configuration.
23. Enhancement to the GLO feature to support the Area detailer, Change range, Split range and Circular Bar Detailer.
24. Support for Lenton Lock Coupler.
25. Enhancement to custom sorting for Member and Release to default from drawing.
26. Option to display the coupler type in Dimensioned sketches using custom block files.
27. Option to print the Coupler Report from the Bar Schedule using the customised report file.
28. Option to configure the drawing of Unscheduled Bars in a separate layer.
29. Option to configure the Bar Leader Line offset from the Bar Label.
30. Option to exclude Bar Mark for labelling Unscheduled Bars.
31. Option to view the bar Set Number in Free Form Bar Schedule view.
32. Fix to allow the display of alternating solid and hollow bars for Alternate Range Bar Runs.
33. New feature to display both the Net length and Gross length of bars in the Bar Schedule using the customised BDF file.
34. New feature to display bar ends as 'doughnuts' or 'cross' based on the projecting bar view when using the customised BDF file.
35. Fix to the Split Range Tool which failed to execute in specific sequences.

36. Fix to the pile cap detailer tool to round off spacing as per rounding configuration.
37. Fix to the Schedule Revision Mark which failed to update in a specific sequence.
38. Fix to the VPM viewports to avoid multiple warning messages for overlapped viewports.
39. Fix to the Bar in Section which failed to draw as per configuration in a specific sequence.
40. Fix to the Weight Report and Weight Summary Report to display correct user field values.
41. Fix to the Change Set to View command to remove Extra Notes.
42. Fix to the Bar Schedule on drawing feature to display straight bar leg dimension as per the Bar Schedule Configuration.
43. Fix to the Check RC Database command for invalid date error warning.
44. Fix to the Check RC Database command to improve performance in a specific sequence.
45. Fix to the Drawing Issue feature to improve performance with the Lock issued line configuration option.
46. Fix to the Run to path command which detailed incorrectly in a specific sequence.
47. Fix to the RC Beam Designer Link to detail the Bar Leader line in the correct position.
48. Fix to the Change Range Type for an incorrect range drawing in a specific sequence.
49. Fix to CAD\$RC_REDRAW to correct bar orientation in a specific sequence.
50. Fix to the Bar Schedule - Localisation configuration setting to restrict '0' precision when Length is configured to show in Metres.
51. Fix to ensure the bent bar rounding value is not applied to straight bars in a specific sequence.
52. Fix to the Special Bar feature to read the correct file path in a specific sequence.
53. Fix to the Override Revision Mark when '-' is used for the first issue.
54. Fix to the CAD\$RC_REDRAW command to avoid bars with coupler 'explode' in a specific sequence.
55. Fix to the Overstock length feature to work with the DIMENSIONMINIMUMS configuration in a specific sequence.
56. Fix for AutoCAD Map3D 2013 to avoid an application crash while closing the application.
57. Fix to printed Reports and Bar Schedule on Drawing to report Unit weight in a specific sequence.
58. Fix to Bar Reference to avoid incorrect reporting as a non-linked entity in a specific sequence.
59. Fix to Tapered Ranges for inconsistencies between Bar Schedule and drawing in a specific sequence.
60. Fix to delete viewport border in model space if the viewport is deleted in the paper space.
61. Fix to the Share Range feature which failed to execute in a specific sequence.
62. Fix to incorrect text size when the drawing is saved in paper space.
63. Fix to the AutoCAD drop down menu to display properly in a specific sequence.
64. Fix to the Area detailer to draw the correct envelope in a specific sequence.
65. Fix to the Bar Reference to display the correct Bar Mark in the Over Stock Length group.

- 66. Fix to the Multiple Pitch Range to update center to center spacing during the Stretch Bar command.
- 67. Fix to the CADS_RC_REDRAW command which incorrectly scaled the Bar Reference in a specific sequence.
- 68. Fix to the configuration \$SHPCD field to display the Bar Shape name in the label to match the display in the Bar Schedule.
- 69. Fix to the AutoCAD Save As command to avoid application crash in a specific sequence.
- 70. Fix to avoid an incorrect revision warning message during drawing opening.
- 71. Fix to retain the configured folder path for the Bar Schedule Configuration file.
- 72. Fix to Range Length to update while editing the Slope Length.

Version 9.11 Service Pack (Build 1713)

- 1. Fix for an inconsistent crash while opening RebarCAD if licensed using a WAN Network dongle.

Version 9.11

- 1. Support for AutoCAD 2013, AutoCAD Architecture 2013, AutoCAD Civil 3D 2013, AutoCAD Map 3D 2013, AutoCAD Mechanical 2013, AutoCAD MEP 2013 and AutoCAD Structural Detailing 2013.
- 2. CADS Stock Bar Optimiser now integrated with the Bar List.
- 3. New message implemented while multi editing bars with non-standard hooks.
- 4. Help button added to the ribbon menu by default.
- 5. New message to warn users before overwriting existing Production Output and Electronic Schedule files.
- 6. Fix to refresh the Bar List on drawing command to update all Bar Lists placed on the drawing when bars with the same bar mark are assigned to different Bar Lists.
- 7. Fix to the Drawing Audit command to add highlighted entities into the previous selection list of AutoCAD.
- 8. Fix to an application crash while closing multiple drawings through the AutoCAD Quick View command.
- 9. Fix to the schedule data mismatch issue which displayed data from another drawing in certain sequences.
- 10. Fix to the Oversized bar end proportional to bar size feature to draw section views for straight bars.
- 11. Fix to AutoCAD leader (ADL) lines to avoid merging of leader lines after executing specific RebarCAD tools.
- 12. Fix to the Check Database routine to avoid an application crash when 'Display dimensioned sketches' configuration is switched on.

13. Synchronisation of release status with file feature now updated to exclude Drawing Set Number while updating the release status.
14. Fix in "Usasm_config.xml" file to display correct path for the Bid Structure import file.
15. Fix to the Double Indicator Range to detailer bar leader inside the VPM layout in a specific sequence.
16. Fix to the Compact Bar mark feature which corrupted the drawing in a specific sequence.
17. Fix to the un-issue schedule command from the Bar List which triggered an unhandled exception error in a specific sequence.
18. Fix to OSL bars in curved areas for a specific sequence in the Area detailer.
19. Fix to an application crash when importing a large Bid Item file in a specific sequence.

Version 9.10

1. New feature to view offcut bars while detailing.
2. New feature to convert plines to bars, linear ranges and tapered ranges.
3. Drawing audit feature rewritten to enhance performance.
4. Additional configuration item in Bar list settings to support length units in centimetres.
5. Option to display centre to centre (c/c) value in the printed reports and schedules placed on the drawing.
6. New feature to wipe out RebarCAD data from an AutoCAD drawing so that RebarCAD drawings could be re-used as templates.
7. Additional configuration item to display oversized bar ends, bar runs and bar in sections, proportional to its bar sizes.
8. Additional configuration option to specify snap setting while placing leader.
9. Additional configuration option to justify range text annotation for multiple pitch ranges.
10. Direct link to Schnell fabrication system.
11. Fix to the Member title dialog which displayed error messages while editing Member title in older version drawings.
12. Fix to Tapered ranges where the abbreviated text was not displayed in the printed reports in a specific sequence.
13. Fix to the multiple bar edit feature to ensure Label notes are updated when any bar parameter is updated along with the bar spacing value.
14. Fix to the pile cap detailer tool to detail pile caps with seven numbers of piles properly.
15. Fix to Bar list which displayed an error while deleting blank lines in a specific sequence.
16. Fix to the Change range type tool in which the alternate range was detailed improperly in a specific sequence.
17. Fix to the Accessories list where the undo command created duplicate accessories lists.
18. Fix to the Beam detailer macro tool which detailed incorrectly after using the "Save as v9.07 drawing..." command.

19. Fix to the Edit range dialog to avoid a crash when the number of bars is set as 1.
20. Fix to the Area detailer where changing cover value to "0" displayed error messages.
21. Additional validation in the Draw bar dialog to avoid drawing corruption when the bar mark is entered as '00'.
22. Fix to the Member and Release dialog to accept special characters for Member title description and Release description respectively.
23. Fix to the Order materials dialog which displayed the weight of bars unassigned to a release in a specific sequence
24. Fix to the Soule production output file in which Date and Time wanted field always defaulted to the current date and time.
25. Fix to the production output files which displayed an incorrect quantity for part of the tapered range bars created in a specific sequence.

Version 9.09 Service Pack (Build 1611)

1. Fix to incorrect placement of AutoCAD dimensioned leader when the vertical text placement is aligned as 'centered'.
2. Fix to the Ticks and tag feature in the VPM environment where the tag text got placed in the "0" layer instead of the configured layer.
3. Additional configuration items in the Tick and tags feature to use AutoCAD leader instead of the standard RebarCAD Leader.
4. Additional configuration items to configure range end marker arrows for single and double indicator ranges.
5. Feature to place bar pointers on a range line when not intersecting with the bar indicator reinstated.
6. Fix to the ASA production output file in the 64 bit version to ensure the 'BC' value is printed out in the correct format.

Version 9.09

1. Support for AutoCAD 2012, AutoCAD Architecture 2012, AutoCAD Civil 3D 2012, AutoCAD Map 3D 2012, AutoCAD Mechanical 2012, AutoCAD MEP 2012 and AutoCAD Structural Detailing 2012.
2. New option to save RebarCAD v9.09 drawings into the RebarCAD v9.04 – v9.07 format. RebarCAD v9.09 drawings are compatible with RebarCAD v9.08 drawing format.
3. Option to display Bar Label notes in Bar Schedule on Drawing and BBS Reports.
4. New feature to display dimensioned Shape Code diagrams in the Bar Label.
5. New feature to configure and place multiline Bar Labels.
6. Special Bar feature now set to automatically create Shape Diagram sketch for Bar Schedule on Drawing and BBS Print Reports.

7. Additional configuration items in the Special Bar feature to display the Special Bar dialog when called from the Draw Bar dialog, to automatically assign leg dimensions when converting AutoCAD polylines into special bars and to automatically name the new Bend Type using predefined Shape Code prefix.
8. New feature to show the Revision Cloud for only the Current Revision or for All Revisions.
9. Bar label feature enhanced to allow all Object Snap (OSNAP) modes in use, while placing Bar Leader instead of just the 'Nearest' mode.
10. New configuration to control the size and position of AutoCAD blocks in Bar Label format.
11. New configuration to specify offset distance when placing the Bar Mark inscribed in a circle in Bar Label.
12. New feature to control Range annotation Height and Text Style.
13. Additional option to display straight Bar Marks in RebarCAD standard output (CSF format) file.
14. Additional configuration option to configure End Treatment value for Coupler and Thread labels.
15. GLO commands – "Show all Bars", "Suppress all Bars" and "Ignore" reinstated.
16. Fix to Accessories List which caused performance issues in a specific sequence.
17. Fix to AutoCAD leader to avoid incorrect Leader placement in a specific sequence.
18. Fix to the CADS_RC_REDRAW command which exploded Bars and Ranges in a specific sequence,
19. Fix to the Draw Bar dialog to avoid showing incorrect error messages with USSIMP.DEF settings,
20. Fix to the Over Stock Length feature to redraw Bar Labels in a specific sequence.
21. Fix to the Bar Schedule on Drawing feature to update the Member\Release description when refreshed.
22. Fix to the Bar Label configuration to report correct Bar Length, when configured.
23. Fix to the Revision Table to display the date format as configured in the operating system.
24. Fix to display Bar Label List on Drawing when only straight bars are present in the drawing file.
25. Fix to the Bar Schedule view which failed to display certain Bar Sizes in a specific sequence.
26. Fix to the Bend Bar List on Drawing command to avoid listing straight bars when refreshed.
27. Fix to Member, Release, Bid Item and Bid Structure dialogs to accept special characters.
28. Fix to the Bar Schedule view & Order Materials dialog to display correct weights in a specific sequence.
29. Fix for incorrect Bar References scaling when configured to use AutoCAD Leaders.
30. Fix to the Menu Load command in certain sequences.
31. Fix to the Revision feature which sporadically corrupted the revision history and also affected drawing file performance.
32. Fix to the Alternate Range which displayed the incorrect number of Alternate bars in a specific sequence while running the check database command.

Version 9.08 Service Pack (Build 1548)

1. Fix in DEF file migration utility to automatically update DEF files created in earlier versions of CADS RC.

Version 9.08

1. New feature to convert Poly line into special bars, Special Bar creator improved to allow optional hooks.
2. Stock Bar Optimiser feature available to produce bar cutting schedule and reduce scrap.
3. Option to specify Label rotation angle when drawing Bars or Ranges.
4. Bar Schedule now supports 20 numbers of user fields which can be used in the Schedule on Drawing or Printed Reports.
5. Drawing data structure restructured to improve performance while opening and saving the drawing.
6. New feature to Search bars of specific bar marks/size/bend type or bar grade in the Bar Schedule.
7. Coupler data updated as per latest available datasheets.
8. Support for GTECH couplers.
9. New feature to specify and apply End Treatments to bar ends and to view the End Adjustment Value in the coupler dialog.
10. Highlight Bar feature improved to highlight labels along with bars.
11. Option to swap bar marks for Alternate Range from Edit Range dialog.
12. Bars can be assigned to Bid Item and Bid Structure in addition to Release, Drawing Sheet and Member. Configuration option available to enable or disable the same.
13. New feature to provide Release Description for each Release.
14. Option to sequence Release, Bid Item, Bid Structure and Member in their respective dialog boxes.
15. Additional option to select all bars un-assigned to any Release to a valid Release. This option is available for Bid Items too.
16. Configuration option to synchronise project based Couplers, Release, Bid Item & Bid Structure from an external file.
17. Harris (*.TSV) file format in Production Output File and Electronic Schedule file is now supported.
18. Configuration option to notify when a drawing is opened or edited.
19. Critical dimension for bars now printed in a specific location in the aSa production output file.
20. RC Productivity tools updated to work with new IS 2502 shapes.
21. Fix to Circular Bar Arrangement to draw bars in concentric circles in a specific sequence.
22. Fix to the Schedule on Drawing to report accurate Total Length in a specific sequence.

23. Fix to the SteelPAC (*.SDI) format to allow for IS 2502 contract standard.
24. Fix to a number of defects to ensure AutoCAD texts are scaled properly in the VPM environment.
25. Fix for Bar Reference copied with Bar and Label even if they are not selected.
26. Fix to the stretch command not working properly while stretching bar run in a specific sequence.
27. Fix to the Extract Data command which incorrectly updated a Bar Mark in a specific sequence.
28. Fix to the save command to ensure the drawing is saved with Schedule on Drawing in a specific sequence.
29. Fix to a specific sequence in the aSa Production output file to ensure Release is ordered only when the Job Number is available.
30. Fix to allow data item Alternate Size and Material for Schedule on Drawing and Printed Reports.
31. Fix to ensure Member Description and Release Description are updated correctly in the Schedule on Drawing header.
32. Fix to ensure the file output from the Free Form bar list is as per configured units.
33. Fix to ensure Number of Members is not zero in the Member dialog.
34. Fix to reinstate the Shape Code column field in the Free Form view in a specific sequence.
35. Fix to the Bar List on Drawing to ensure the Total Length is displayed in a configured unit.
36. Fix to the Bar List on Drawing to ensure dimensions less than a feet in imperial unit are prefixed with zero.
37. Fix to a specific sequence in the dynamic title blocks to ensure Drawing Number is read correctly.

Version 9.07 Service Pack (build 1498)

1. Fix to a specific sequence of the stretch command for fixed pitch ranges and multiple pitch ranges, which updated range length with an incorrect value.
2. Fix to a specific sequence in the Match bar command which failed to update bar marks with a prefix.
3. Fix to incorrect scaling of Bar references in the VPM environment when copy/pasted from another drawing.
4. Fix to the Match bar command line entry to accommodate values other than *Yes* or *No*.
5. Fix to the Extract data command which missed updating the bar mark with the correct bar diameter.
6. Fix to ensure the CADS RC Online feature looks for new updates only as per the configuration set by the user.

Version 9.07

1. Support for AutoCAD 2011 (and all verticals).
2. Support for RC Productivity Tools in 64 bit operating systems.

3. Support for importing Eurocode 2 design jobs into CADS RC.
4. Fix to the check database command which failed to identify and correct incorrect bar label.
5. Fix to the title block configuration and connecting to the website every time you open CADS RC in Windows Vista and Windows 7 machines.
6. Fix done to the Mesh Calculator configuration when adding new mesh types.
7. Fix to the Radial Bar Detailer default grade type.
8. Fix to bar schedule data error for Alternate Ranges in specific sequence.
9. Fix to Step Taper Range to ensure the bar data is correctly updated to the bar schedule.
10. Fix to SMSD resulting in bar schedule data mismatch in a specific sequence.
11. Fix to the stretch command not working properly for an Alternate Fixed Pitch/Alternate Multiple Pitch Bar Run.
12. Fix for the range line exploding problem in a specific sequence.
13. Fix to the bar label revision cloud not appearing in a specific sequence when doing a bar edit.
14. Fix to Split Range where the number of bars were shown as zero in a specific sequence.
15. Fix to the Add Chair feature when placing it with the No Bar View option.
16. Fix to the production output files which included deleted bar information in a specific sequence.

Version 9.06

1. Support for 64 bit versions of Windows 7®, Windows Vista® and Windows XP®.
2. Support for AutoCAD 2010 installed with AutoCAD Structural Detailing Suite.
3. Improved performance for the bar schedule feature.
4. Configuration option to allow combining of bar marks spread across different members.
5. Drawing audit feature improved to identify and highlight bars un-assigned to any drawing sheet, member or release.
6. Option to remove configured drawing sheet title blocks using the Configure Title Block dialog.
7. Additional check for bars un-assigned in any drawing sheet during operations such as drawing sheet issue, print report and place bar schedule on drawing.
8. Fix to the Assign bars to release command to reinstate by Member and by Drawing sheet option.
9. Fix for crash in ACAD 2010 when the purge command is used.
10. Fix for incorrect placement of Revision clouds and Call out symbols.
11. Fix for ACAD crash in Vista while opening CADS RC installed with CADS RC Palettes pre-release.
12. Fix to validate bar mark entry such that it does not contain any special characters.
13. Fix for the title block configuration utility which caused a delay in opening certain drawing files.

Version 9.05

1. Support for AutoCAD 2010 and all verticals (AutoCAD Architecture 2010, AutoCAD MEP 2010, AutoCAD Civil 3D 2010, AutoCAD Map 3D 2010, and AutoCAD Mechanical 2010).
2. Configuration to control offset between the revision cloud and label.
3. Configuration to place a weight summary table on drawing for “all” or for selected Drawing sheets/Members/Releases.
4. Ability to place the schedule on a drawing even for *Unassigned* Drawing sheet/Member/Release.
5. Supports bar shapes with predefined couplers.
6. Configuration option extended to show Members/Releases dialog while drawing the first bar.
7. Option to control “99-”character prefix to special shape code name in SteelPac electronic output file.
8. The DEF file used in the drawing is displayed in draw bar and edit bar dialogs.
9. Configuration option for tapered ranges to control the text line description and its position.
10. Fix to revision mark corruption on opening issued drawings created in previous versions.
11. Fix to edit header and footer fields to retain the entered values after saving the drawing
12. Additional filter options in “Assign bars to release” dialog.
13. Option to assign partially un-ordered bars to selected release.
14. Configuration option for ASA output to display the bar mark for straight bars.
15. Configuration option to control the display of imperial dimensions less than 1’ with or without leading 0’ character.
16. Fix to the ASA output to remove duplicate 2R lines.
17. Fix to the RMS output to support four digits of total number of bars value.
18. Fix to the Soule output files displaying junk characters while importing.

Version 9.04

1. Support for AutoCAD Mechanical.
2. Support the display of actual dimensions on schedule diagrams.
3. Facility to edit (override) a bars revision level and page header revisions.
4. Un-combine command.
5. Configuration to control whether bar mark is reported for straight bars.
6. Partial un-order facility.
7. Ability to place multiple schedules on a drawing in one operation.
8. Enhanced highlight bar in drawing command.
9. Specify revision level for each revision type configuration option.
10. Removal of errors caused by title block fields.

11. Drawing re-use warning on Check Database command.
12. Refresh all viewports commands.
13. Additional CSF data format configuration settings.
14. Stability improvements to expand operational boundaries.
15. Additional configuration to control the presentation of shape diagrams within reports.
16. Rationalisation of coupler configurations.
17. Member and release description fields available for review from the bar list dialog.
18. Fix to incorrect revisions when stretching ranges.
19. Fixes to the Steelpac output so as to make diagram identification consistent.
20. Fix to the date format issues within the Steelpac output.
21. Fix to rescaling of annotation on closing/saving a drawing.
22. Reduction in permissible stock lengths.
23. Weight units shown in summary tables.
24. Numerous fixes to presentation problems in Excel.
25. Fix to the problem causing loss of ribbon icons following installation of AutoCAD 2009 updates.
26. Resolution to defect that causes “command in progress” errors to appear.
27. Confirmation requested on pressing cancel from Configure Title Block dialog.
28. Improved accessibility to Excel and PDF output features.
29. Restriction on use of obsolete re-sync command Selection of fixes to the RC tools including Area Detailer, Split Range, etc.
30. Batch import into CADS-BL (Beam Link).
31. Support for longer member title names.

Version 9.03

1. Support for AutoCAD 2009 (and all verticals).
2. CADS RC Ribbon offered in AutoCAD 2009, together with extended tooltips.
3. Schedule menu and toolbar replaced with ribbon panel.
4. Improved icons on all ribbons, toolbars and ribbons. Full support for the AutoCAD *Use Large Buttons for Toolbars* feature.
5. Specification of up to three separate BDF files now possible. Additional sort options allow the shapes from these files to be sorted and grouped.
6. Re-instated v8 approach to the product launch from the desktop icon. Support for AutoCAD parameters such as /t to load a specific DWT file now restored.
7. No need for administrator rights when installing for Windows Vista.
8. Raft of memory management improvements aimed at improving product stability.
9. Data integrity checks added to all output options.

10. Revision clouds and symbols now placed on different layers.
11. Fixed the problem that prevents double-click editing of bars when true type fonts are configured.
12. Controls used for report printing updated (DevExpress v7.2).
13. The highlight bar in drawing feature now supports multiple drawing sheets.
14. Use of legacy v8 DCL files is detected and a warning supplied.
15. The Save As v8.4 feature now offers advice on saving to previous DWG formats.
16. Numerous stability improvements following investigations into damaged drawings.
17. Products now grouped under the “Detailing” folder within the Windows Start menu.
18. Various fixes that ensure the schedule accurately reflects bars drawn via the RC tools.
19. Shape diagrams now coming through to RTF format.
20. Numerous fixes to problems related to the display of shape sketches within the schedule.
21. Fix to the problem of electronic transfer files not being generated when a fixed location is specified.
22. Free-form report now sorts correctly by default and formats weights as per localisation settings.
23. All printed reports converted to print to A4 instead of Letter layout.
24. Report designer now offers a field equivalent to the *Drawing Sheet Revision Mark*.
25. Now only the appropriate dimension columns are shown by default in the schedule.
26. Resolution of problems pertaining to use of the compact bars command when bars had been ordered.
27. Various fixes related to the incorrect scaling of entities by Viewport Manager.
28. User fields now shown in the header even when multiple pages are output.
29. The AutoCAD last and previous operator is being wiped by CADS RC.
30. Support for specification of a blank first revision level added.
31. Shape table scaled and formatted to match v8.
32. Revision table now adopts the date format from Windows.
33. Fix to the problem whereby cell width is enlarged for schedules placed in paperspace.
34. Configuration that controls the display of run-out dimensions rectified.

Version 9.02

1. A number of key fixes have been made to resolve issues that caused either error messages on entering the schedule or for the data shown in the schedule to be out-of-step with the drawing.
2. The Check Database command has been extended to identify and correct any discrepancies between the drawing and schedule.
3. A range of performance improvements have been implemented especially in relation to prolonged periods of use with the schedule continually open.

4. Auto-combine feature added.
5. The resetting of the OSNAP settings following use of CADS RC commands has been resolved.
6. New highlight bar in drawing feature added to the right click menu on the formatted view of the schedule
7. Feature to automatically migrate V8 DEF files introduced.
8. Simplification of the title block (drawing sheet) configuration workflow.
9. Option to abbreviate the reporting of tapered ranges included.
10. Array of area detailer improvements including improved label placement, support for OSL ranges, and tapered range usage. (These will come through to SMSD).
11. Range of AutoCAD Dimension Leader (intelligent leader) improvements.
12. Locked lines issuing and revision setting now supports improved control over formatting.
13. Locked lines now set as the default issue and revision configuration option.
14. Improved defaulting of the current drawing sheet and member throughout the program.
15. Fix to the match bar problem when bar marks exceed two characters.
16. Text font improvements related to schedule on drawing customisation.
17. Header date fields now fully editable and stay set following issue, etc.
18. Resolution of defects that result in drawing damage when saving following a close operation.
19. Removal of restrictions on saving to a previous version of AutoCAD.
20. Combined E/R column supplied in the schedule dialog.
21. Tutorial extended and quality of screen shots improved.
22. Improved alignment of program headers to standard report headers.
23. Editing of OSL bars now successfully triggers revision warning.
24. Improved locating of slide files created via the special bar creator.
25. Range of stability and usability improvements to the RC tools and detailers.
26. Substantial ranges of additional minor fixes to schedule related functionality.

Version 9.01

1. New schedule with attractive, interactive and friendly user interface (see What's New & Getting Started with V9 Guide for more information).
2. Support for Microsoft Windows Vista.
3. Support for AutoCAD 2008 (and all verticals).
4. Create multiple drawings and schedules from a single DWG file. Support for working across AutoCAD layouts, via drawing sheets.
5. Fully featured issue and revision system including automatic generation of revision clouds and tables.
6. Produce quick reports and queries using the new free-form report generator.

7. Multiple sorting and formatting options.
8. Set your company standards using the simple and concise schedule configuration.
9. Support for Autodesk Civil 3D, Autodesk Building Systems, Autodesk Map3D (2006 and above).
10. Numerous installation improvements and applications now load automatically.
11. Improved product documentation.
12. Tip-of-the-day and usage tips added.
13. Extensive improvements to the RC tools.
14. Range of CADS Viewport Manager fixes/improvements.